



JETT LANE RELEASE

Elements North Queensland are excited to offer six new residential lots in the Jett Lane land release in Aurora.

These highly sought after generously sized lots are set in a unique location on the doorstep of the newly completed Mount Louisa walking tracks, just off Chapple Street.

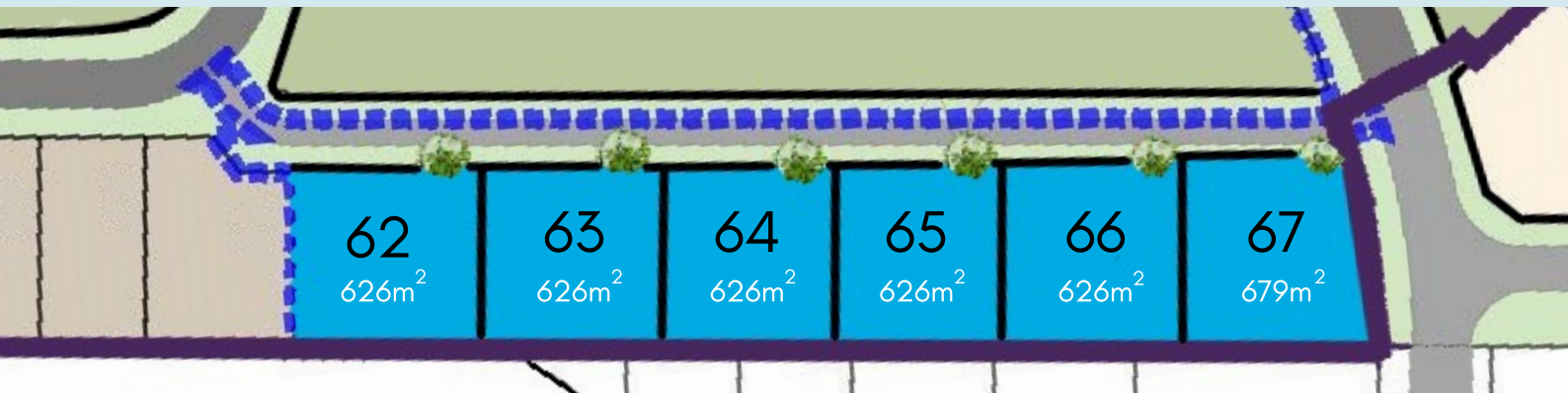
Enjoying cool ocean breezes from the Coral Sea, most of Aurora's home sites boast views right through to Magnetic Island.

4 BLOCKS LEFT

10 MINUTES TO THE CBD

Positioned on the foothills of Mount Louisa, Aurora offers uncompromised living close to quality schools, shops, transport hubs, parks and playgrounds.

Aurora is being delivered by one of Townsville's longest established developers, Elements North Queensland. They have been creating quality communities in Townsville for over 30 years. Their long-list of developments include the award-winning Greenwood and Greenview estates, as well as The Orchard, an exciting large-lot master planned community located at 28 Darling Road in Jensen.



For more information visit us at elements-nq.com.au or call 4731 1425



Aurora

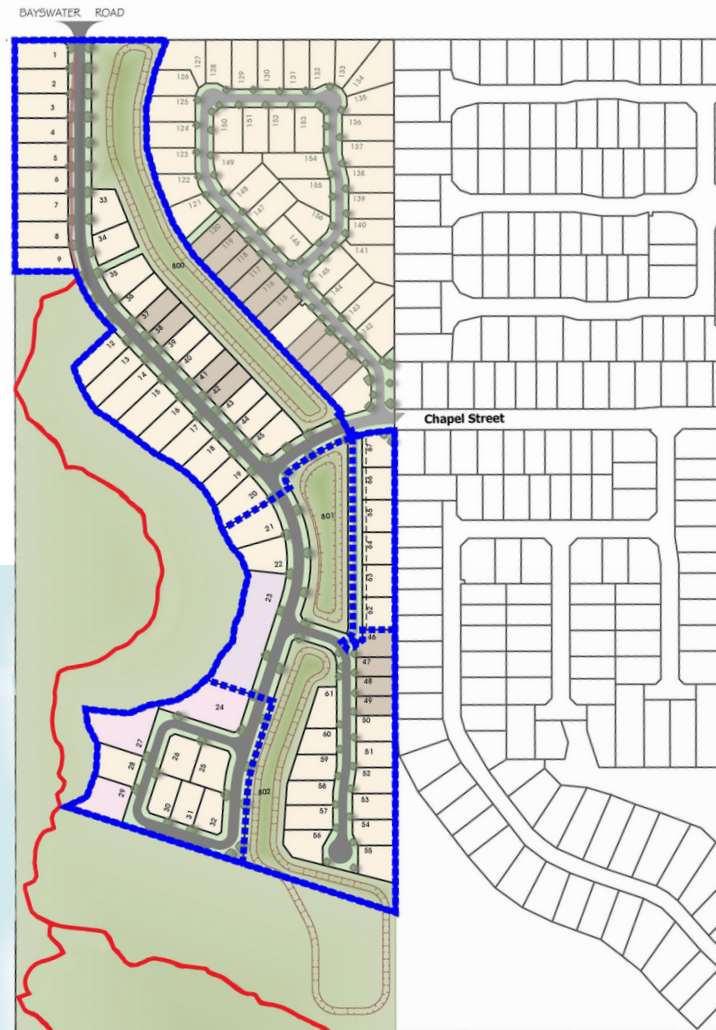
- ★ 10 minutes to the CBD
- ★ Close to schools
- ★ Adjoining existing communities
- ★ Bus stops at your doorstep
- ★ Walking trails and cycle tracks
- ★ Elevated position
- ★ Average lot size 721sqm
- ★ Experienced local developer

MOUNT LOUISA WALKING TRACKS

The walking tracks form part of Townsville City Council's Mount Louisa master plan. Council will invest millions of dollars into the plan to deliver a wonderful community asset.

The walking tracks include:

- 1.8km of quality walking tracks.
- Pristine views out to the Coral Sea including Magnetic and Palm Island's.
- When complete, the walking tracks will extend from the end of Bayswater Road to the summit of Mount Louisa and include two viewing platforms.



Walking Tracks

For more information visit us at elements.nq.com.au or call 4731 1425



ELEMENTS
NORTH QUEENSLAND

SINCE
1988

COMMITTED TO TOWNVILLE FOR OVER 30 YEARS